

FISCAL YEAR	Job. No.	SHEET NO.	TOTAL SHEETS
1928	1114	1	12

Prop. Brs. Donaldson-Friendship Rd. Dist. 1298

STATE OF ARKANSAS
STATE HIGHWAY DEPARTMENT

PLAN OF PROPOSED BRIDGES
ON
DONALDSON-FRIENDSHIP ROAD
CLARK & HOT SPRING COUNTIES

INDEX OF SHEETS

Drwg. No. 1298	Sh. No. 1	Title Sheet Job No. 1114
" 1299	" 2	Layout Sheet Br. # 657
" 1300	" 3	Arch Details Br. # 657
" 1301	" 4	Substructure Details Br. # 657
" 1003	" 5	Standard 35'-0" R.C.D. Girder Span 20'-0" Rdy.
" 1302	" 6	Layout Sheet Br. # 658
" 1303	" 7	Arch Details Br. # 658
" 1304	" 8	Substructure Details Br. # 658
" 1305	" 9	Layout Sheet Br. # 659
" 1306	" 10	Layout Sheet Br. # 660
" 1019	" 11	Standard 35'-0" R.C.D. Girder Span 20'-0" Rdy. Pier Berths
" 1306-A	" 12	Handrail Details for Br. 657, 658, 659, 660

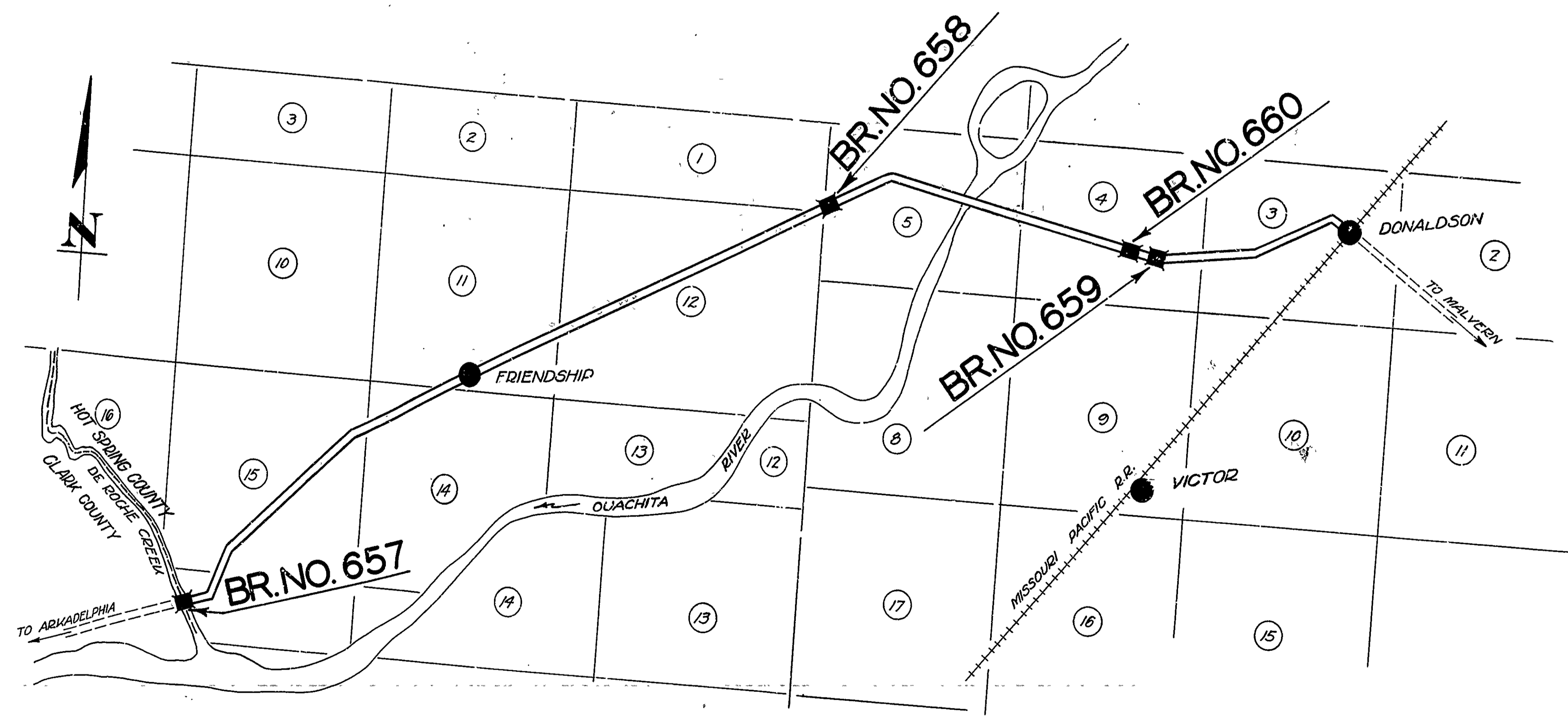
QUANTITIES

Item No. 17	Borrow	4584 Cu. Yds.
" 12	Earth Excavation	3207 Cu. Yds.
" 13	Dry Excavation for Structures	545 Cu. Yds.
" 13	Wet	223 Cu. Yds.
" 13	Solid Rock Excavation for Structures	108 Cu. Yds.
" 54	Class 5 Concrete	1193.78 Cu. Yds.
" 54	" "A"	250.96 Cu. Yds.
" 55	Reinforcing Steel	317,654 Lbs.
" 65	Precast Concrete Piling	1,876 Lin. Ft.
" 74	Concrete Railing for Structures	2068.42 Lin. Ft.
" 69	Rip Rap 1' Thick	447 Sq. Yds.

ROUTE 51 SEC. 2 & 3

JOB No. 1114

FEDERAL AID PROJECT No.



LAYOUT

GROSS LENGTH OF PROJECT 1189.08'
NET LENGTH OF PROJECT 1189.08'

APPROVED
COMMISSIONER - STATE LANDS, HIGHWAYS AND IMPROVEMENTS

APPROVED
STATE HIGHWAY ENGINEER

RECOMMENDED FOR APPROVAL
DISTRICT ENGINEER - U. S. BUREAU OF PUBLIC ROADS

RECOMMENDED FOR APPROVAL
CHIEF ENGINEER - U. S. BUREAU OF PUBLIC ROADS

APPROVED
DIRECTOR - U. S. BUREAU OF PUBLIC ROADS

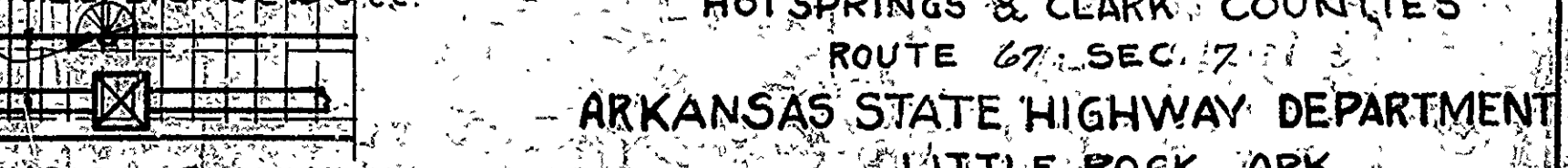
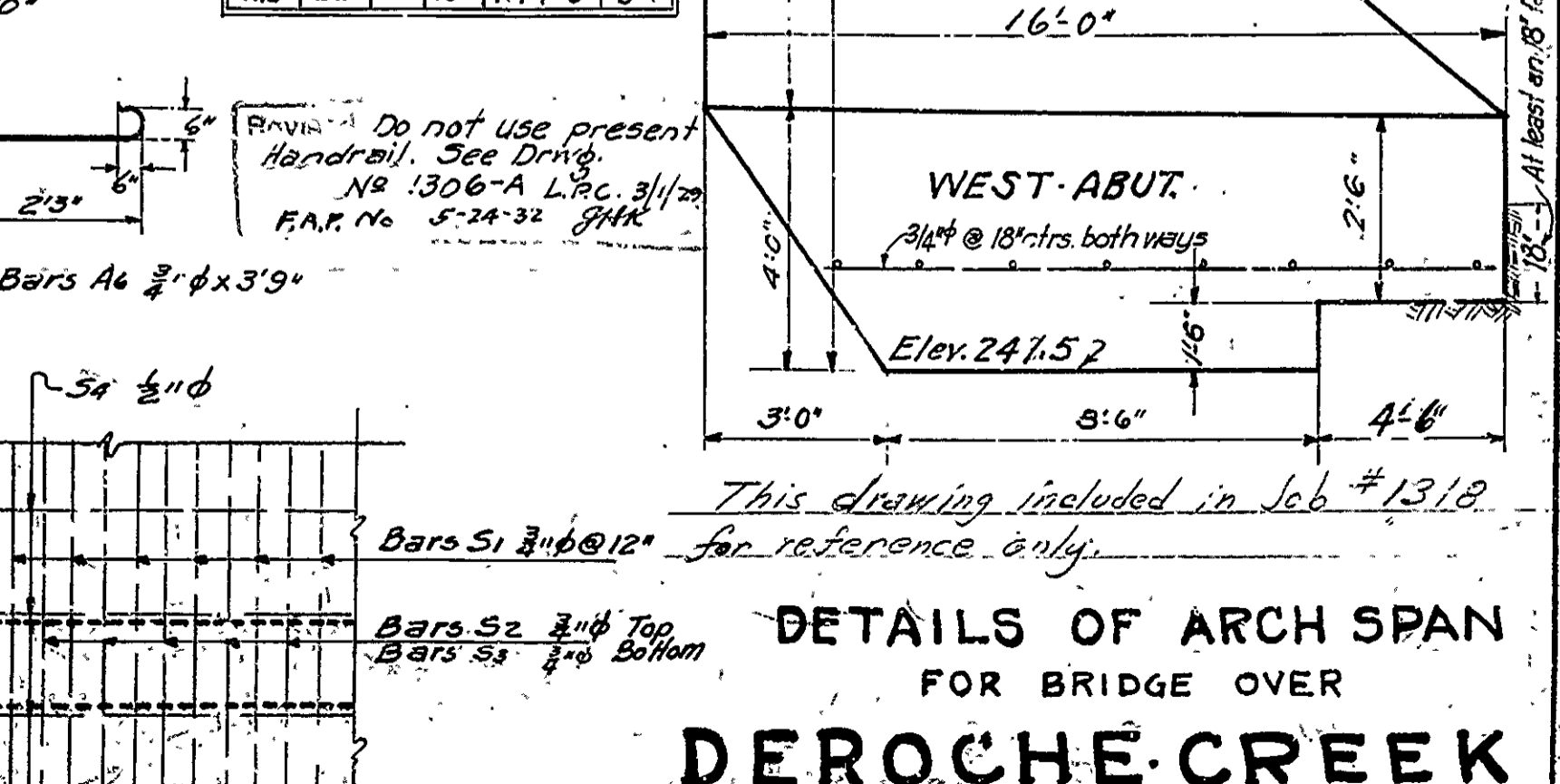
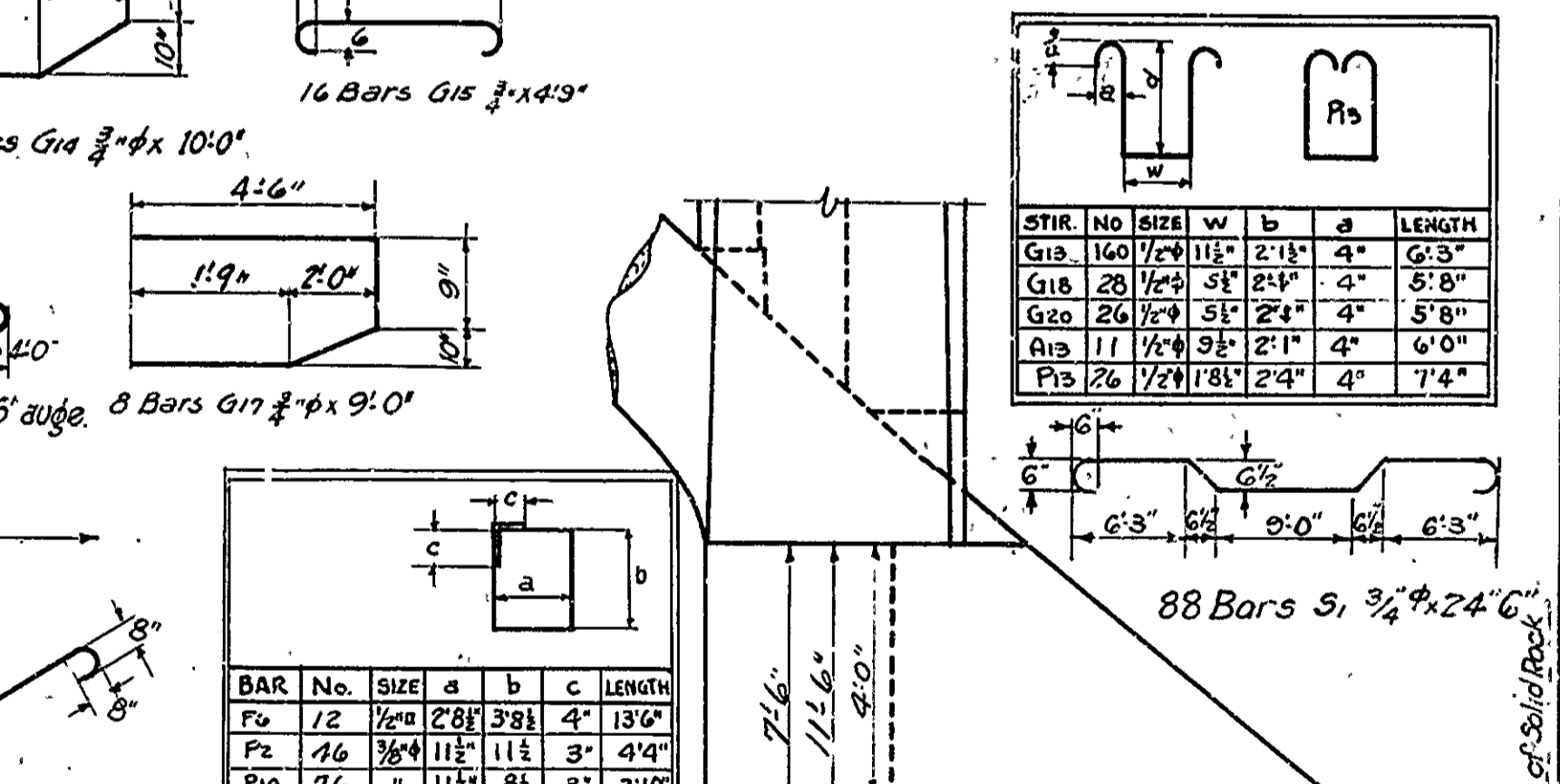
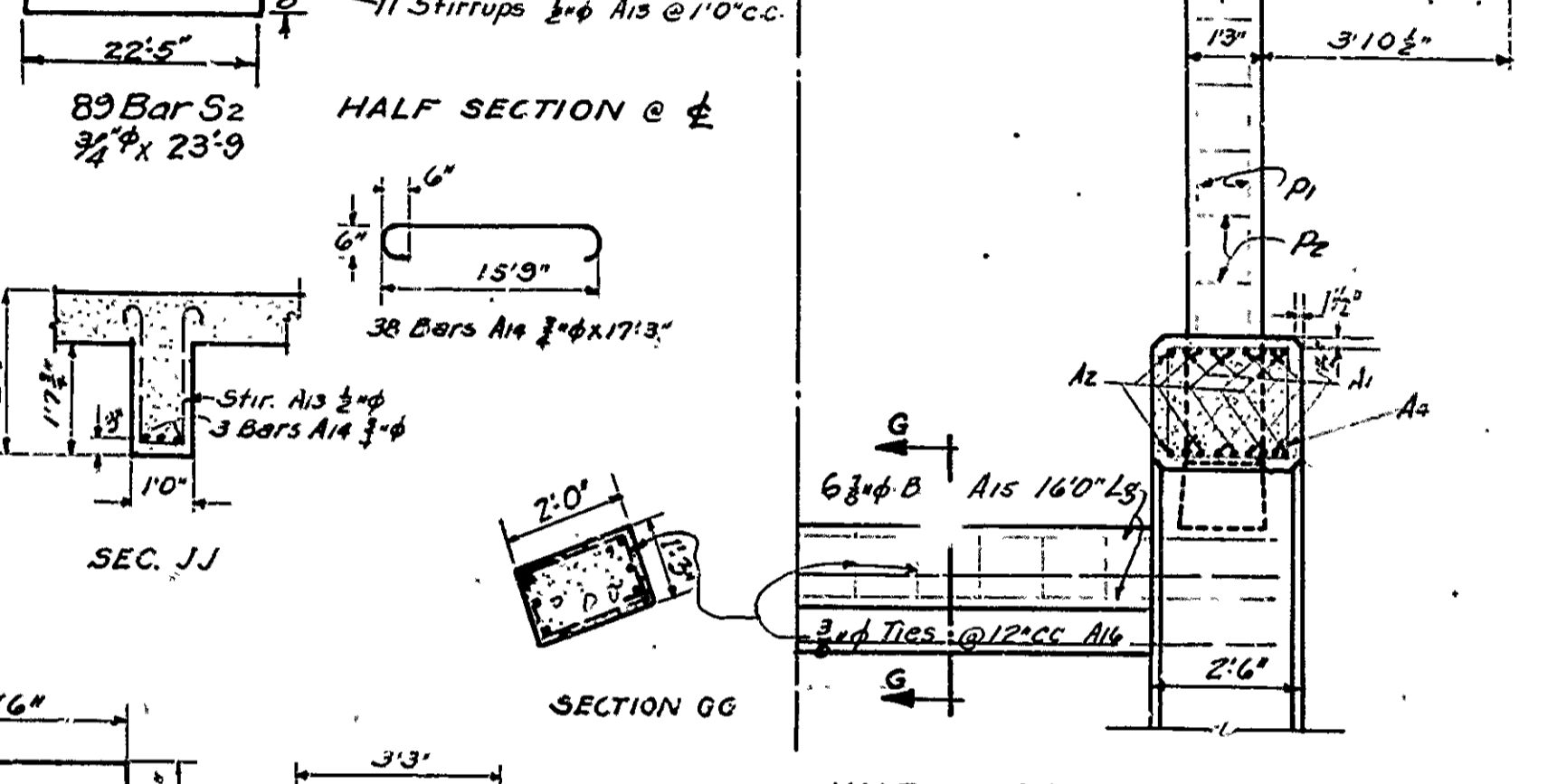
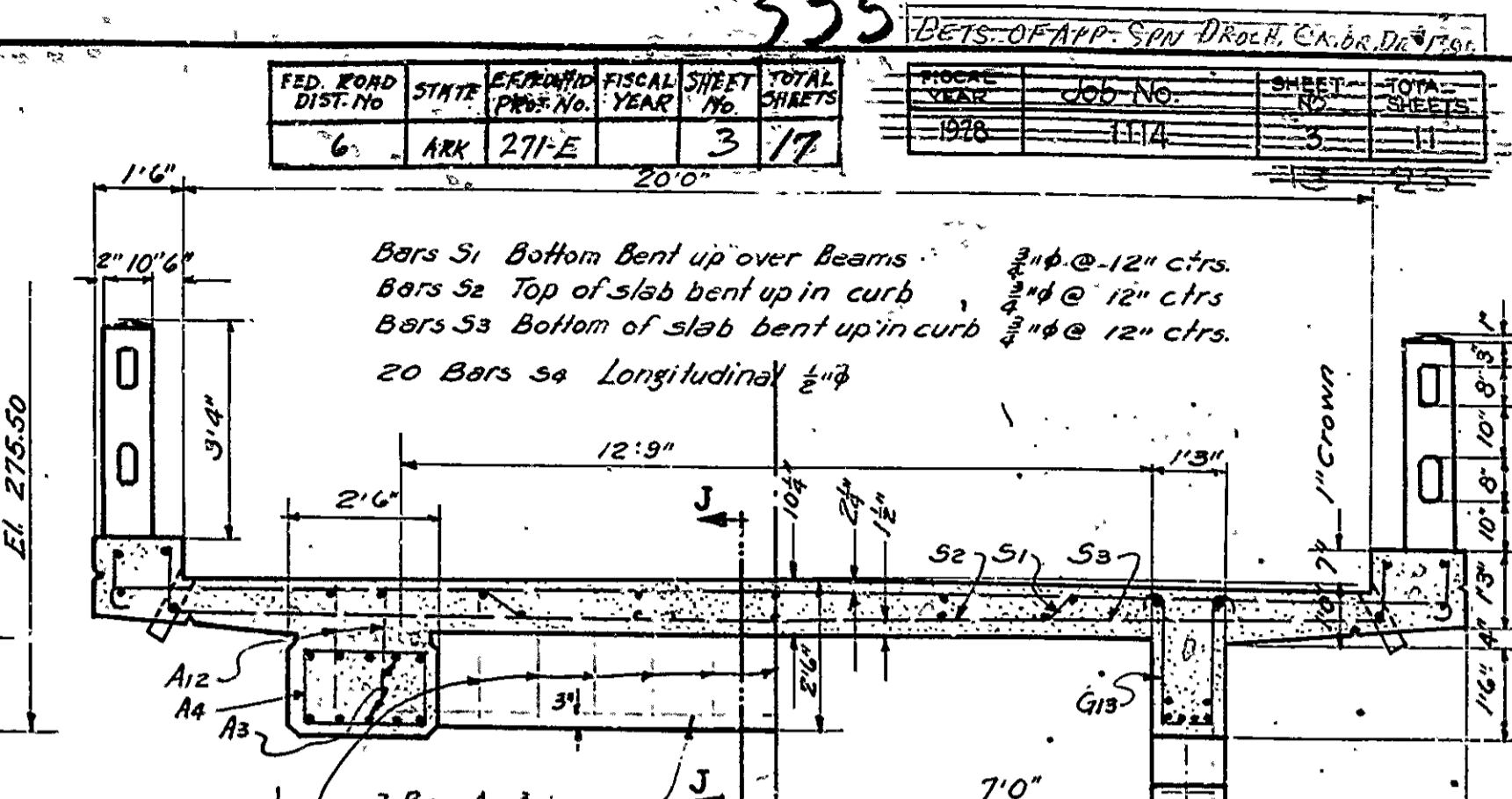
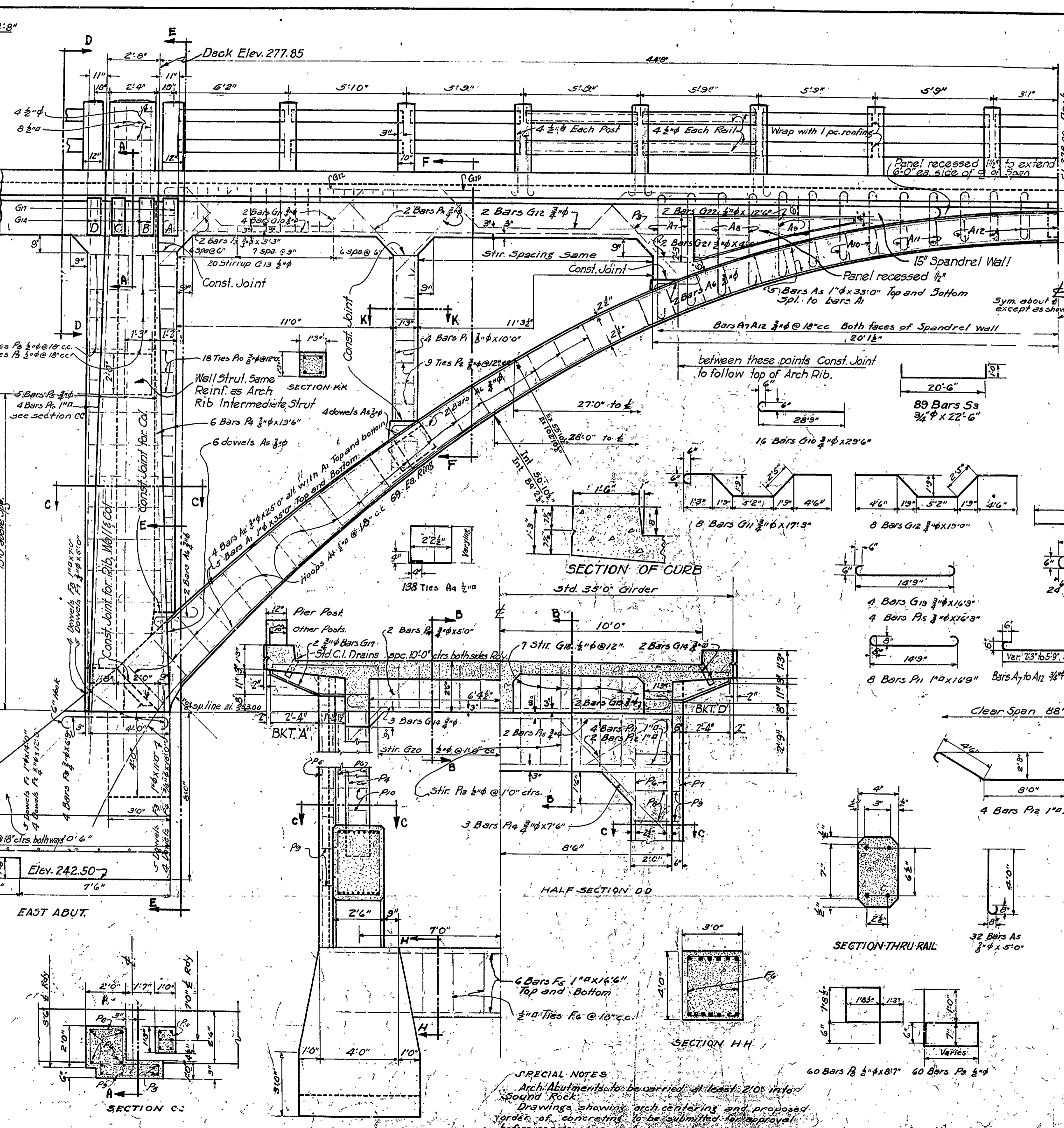
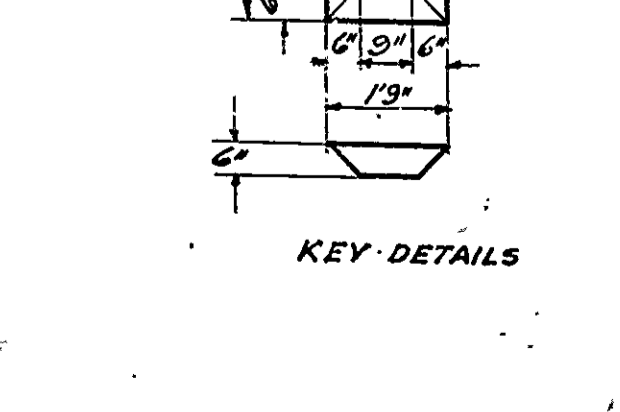
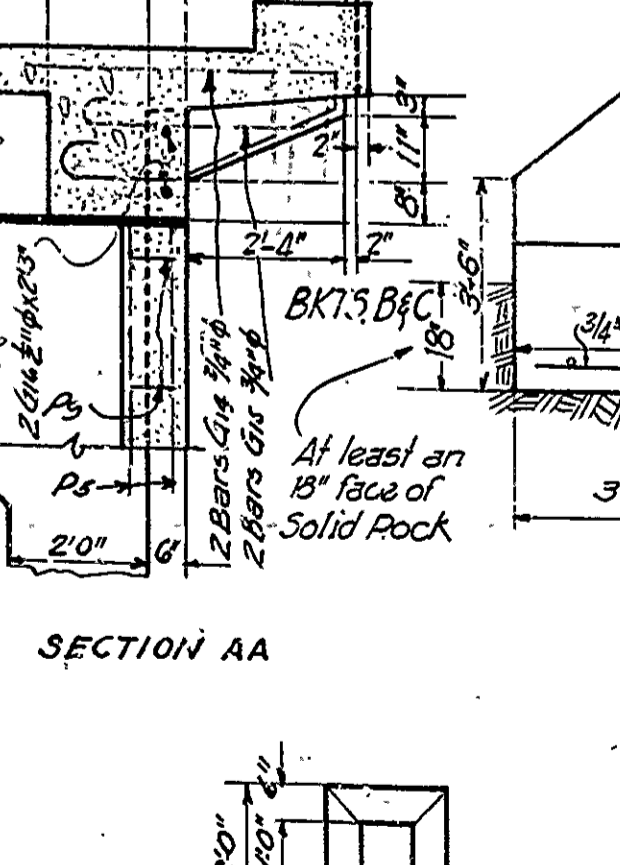
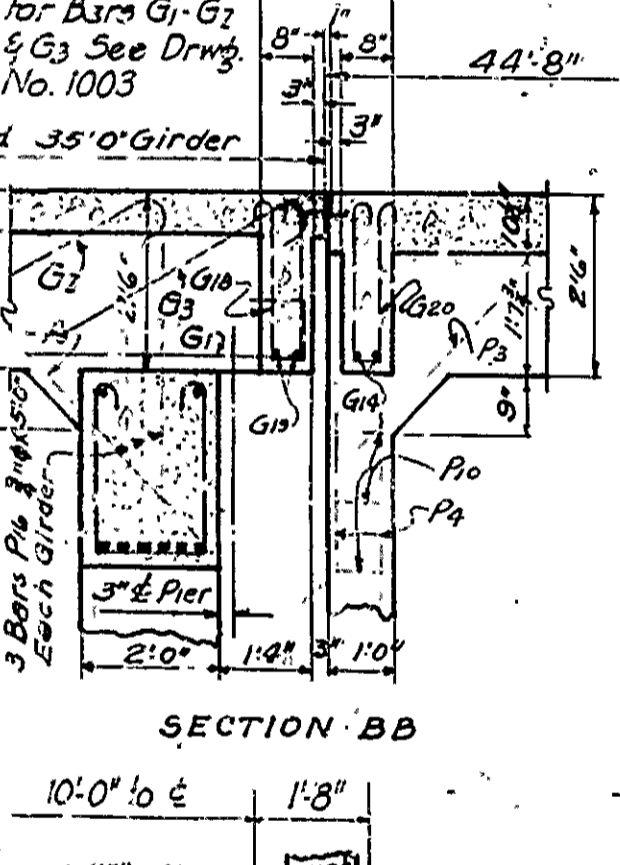
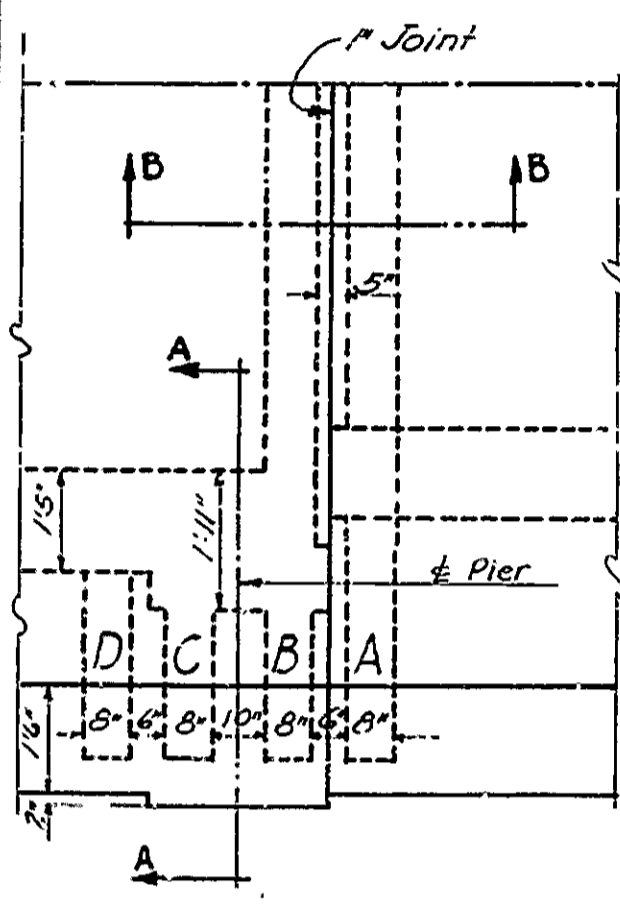
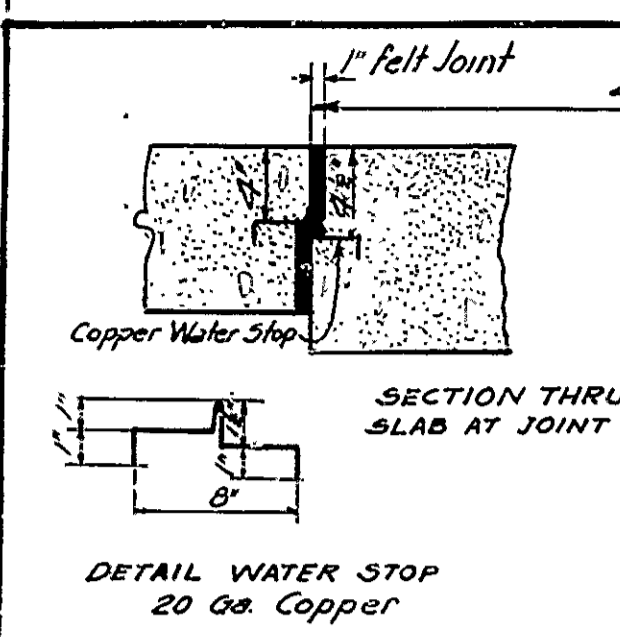
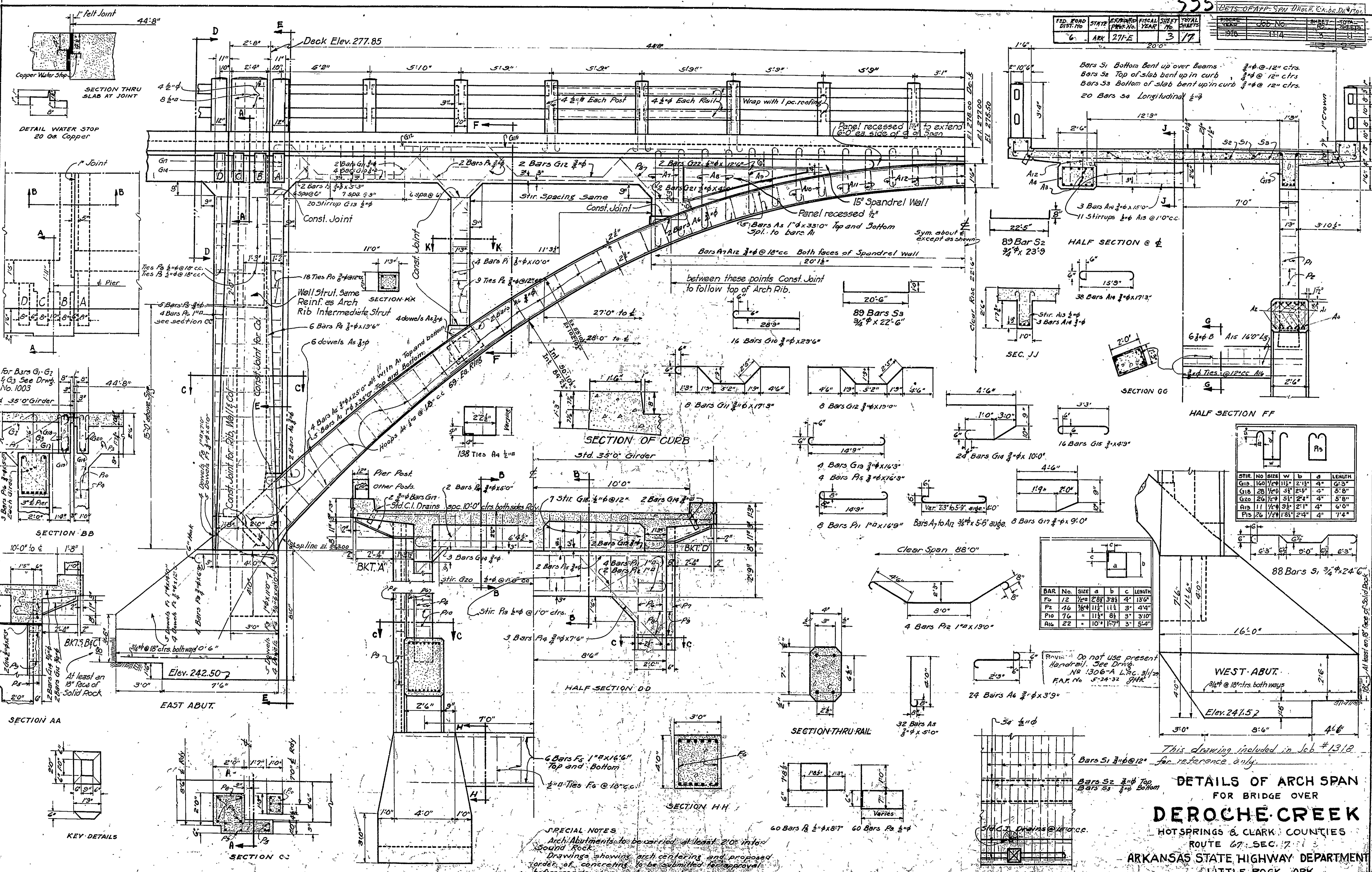
M. B. [Signature]
BRIDGE ENGINEER

BRIDGE No. 657, 658, 660 & 659 DRAWING No. 1298

335

DETAILS OF ARCH SPAN

FED. ROAD DIST. NO.	STATE	SECTION	FISCAL YEAR	SHEET NO.	TOTAL SHEETS
6	ARK	271-E		3	17



STIR. NO.	SIZE	a	b	c	LENGTH
G1	1/2"	11 1/2"	2 1/2"	4"	6' 3"
G2	1/2"	5 1/2"	2 1/2"	4"	5' 8"
G3	1/2"	5 1/2"	2 1/2"	4"	5' 8"
A1	1 1/4"	9 1/2"	2 1/2"	4"	6' 0"
A2	1 1/4"	18 1/2"	2 1/2"	4"	7' 4"

BAR NO.	SIZE	a	b	c	LENGTH
P1	1/2"	2 1/2"	3 1/2"	4"	13' 6"
P2	1/2"	1 1/2"	1 1/2"	3"	4' 4"
P10	1/2"	1 1/2"	8 1/2"	5"	3' 10"
A16	2 1/2"	10"	17 1/2"	3"	5' 4"

SPECIAL NOTES
 Arch Abutments to be carried at least 2'0" into sound rock.
 Drawings showing arch centering and proposed grades of concrete to be submitted for approval before construction of arches is begun.
 For General Notes see Drawings No. 1299 & No. 1003
 For Details of Std. C.I. Drains see Drawing No. 1003

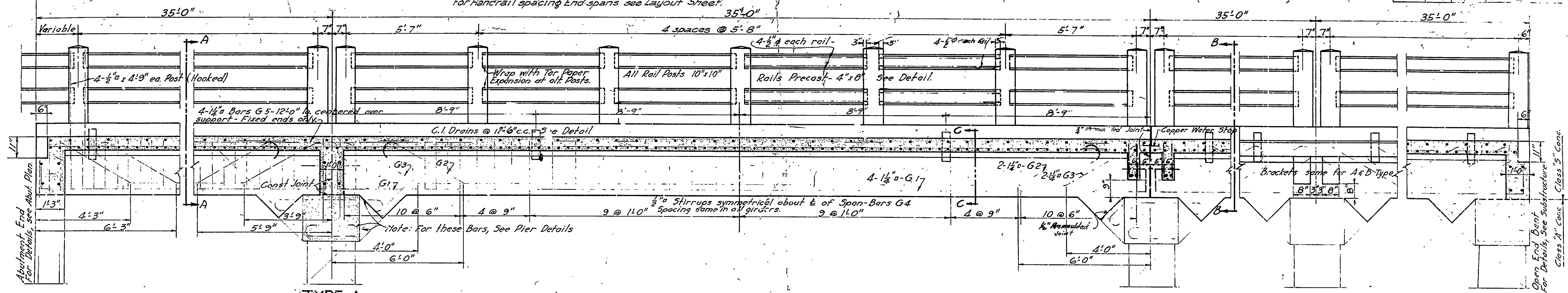
Do not use present Handrail. See Drawing No. 1306-A L.R.C. 3/1/20 F.A.P. No. 5-24-32 A.H.K.

DETAILS OF ARCH SPAN FOR BRIDGE OVER DEROCHE CREEK
 HOT SPRINGS & CLARK COUNTIES
 ROUTE 67, SEC. 7
 ARKANSAS STATE HIGHWAY DEPARTMENT
 LITTLE ROCK, ARK.

DRAWN BY: [Signature] DATE: 9/10-20
 TRACED BY: [Signature] DATE: 8/21-20
 CHECKED BY: [Signature] DATE: [Blank]
 BRIDGE No. 657 SCALE: 3/4" = 1'-0"
 DRAWING No. 1300

Job No.	Sheet No.	Total Sheets
6	1	1

Handrail spacing as shown below for all int. spans.
For Handrail spacing End spans see Layout Sheet.

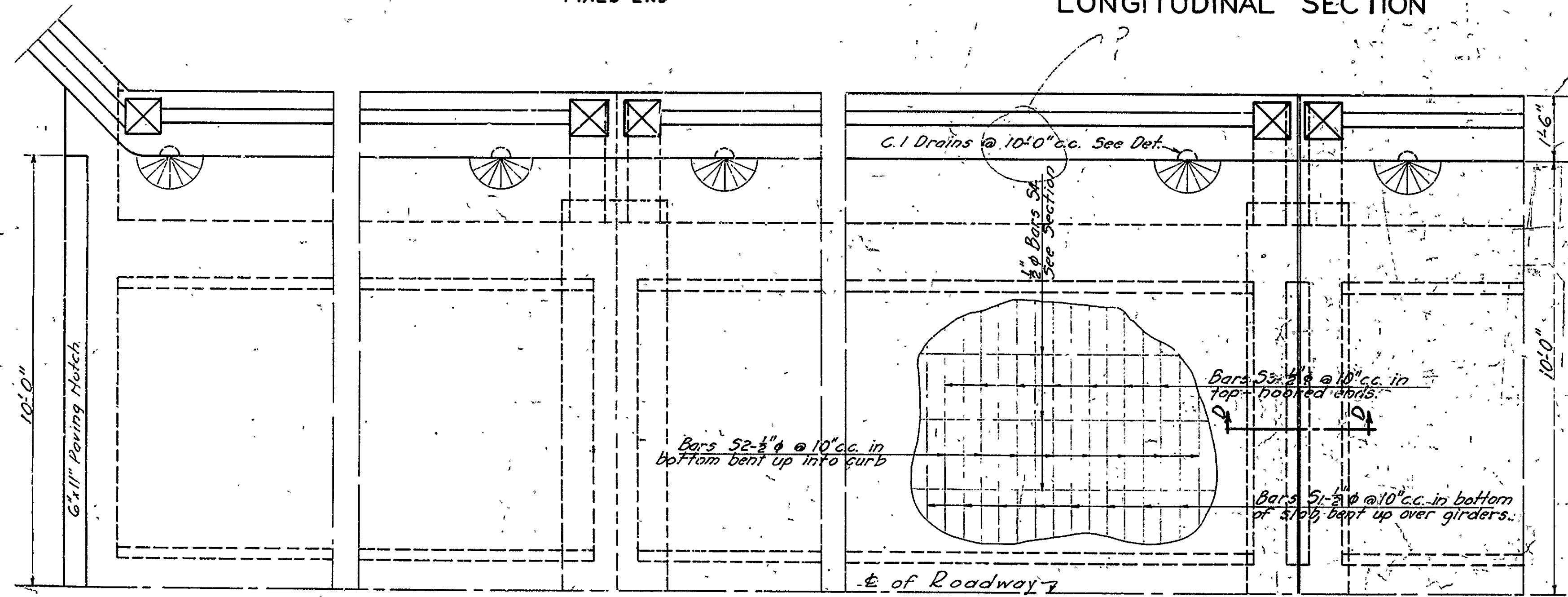


TYPE A
FIXED END

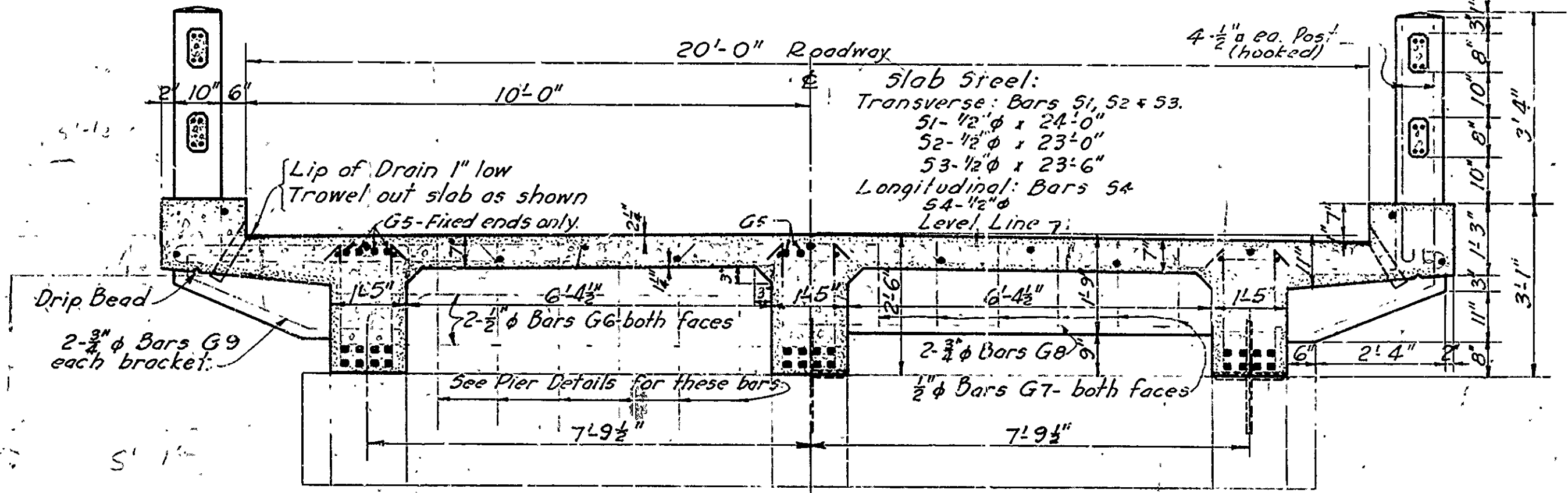
LONGITUDINAL SECTION

TYPE B
EXPANSION END

DETAIL OF BRACKETS



HALF PLAN



SECTION A-A

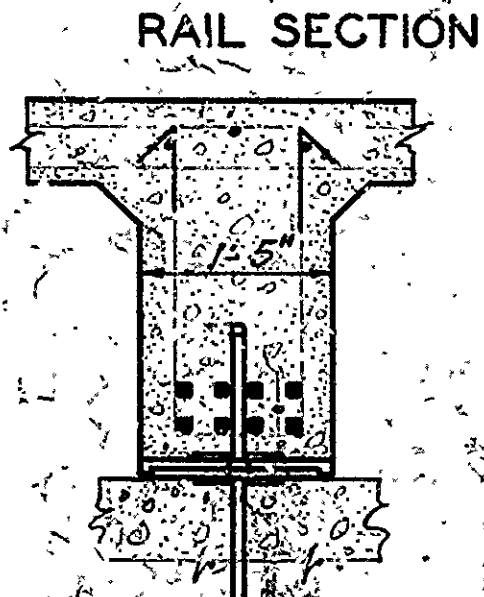
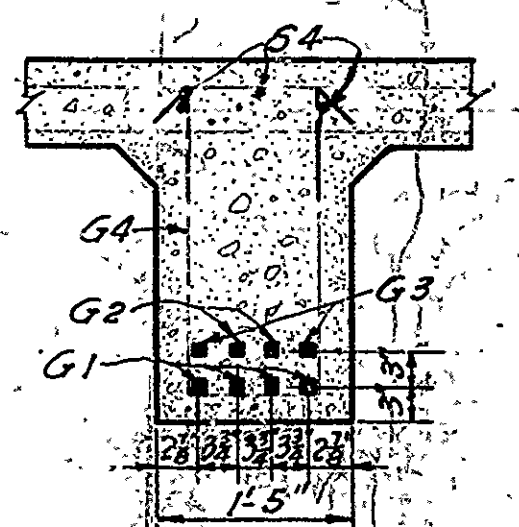
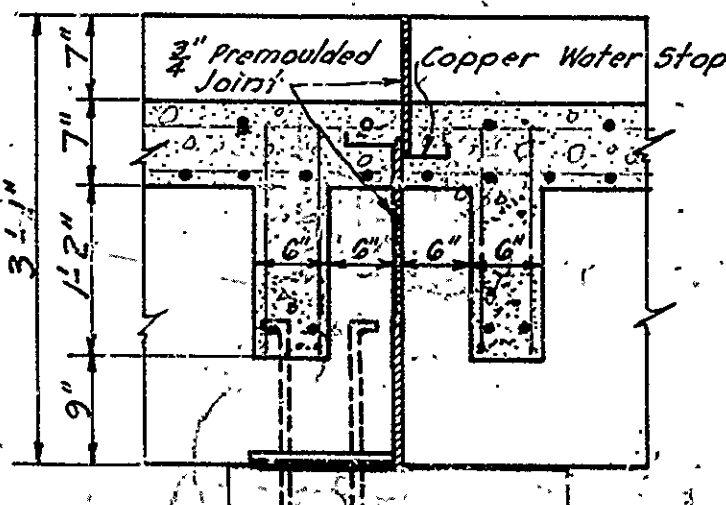
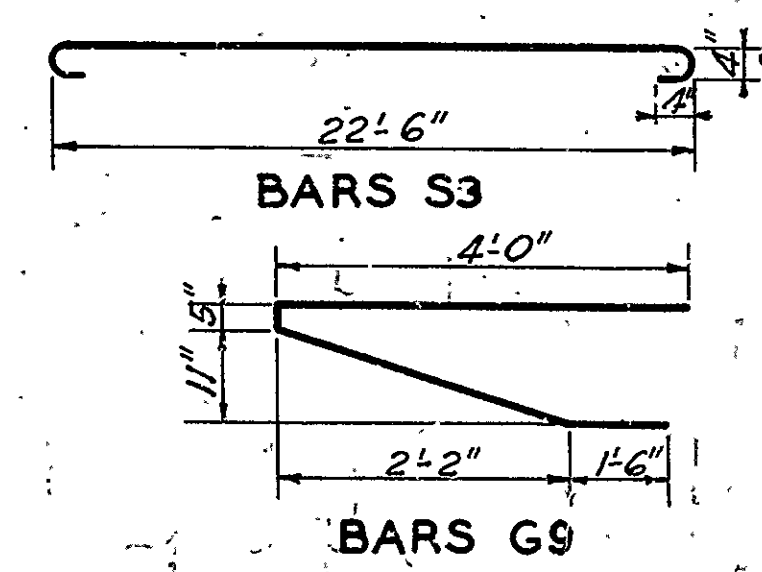
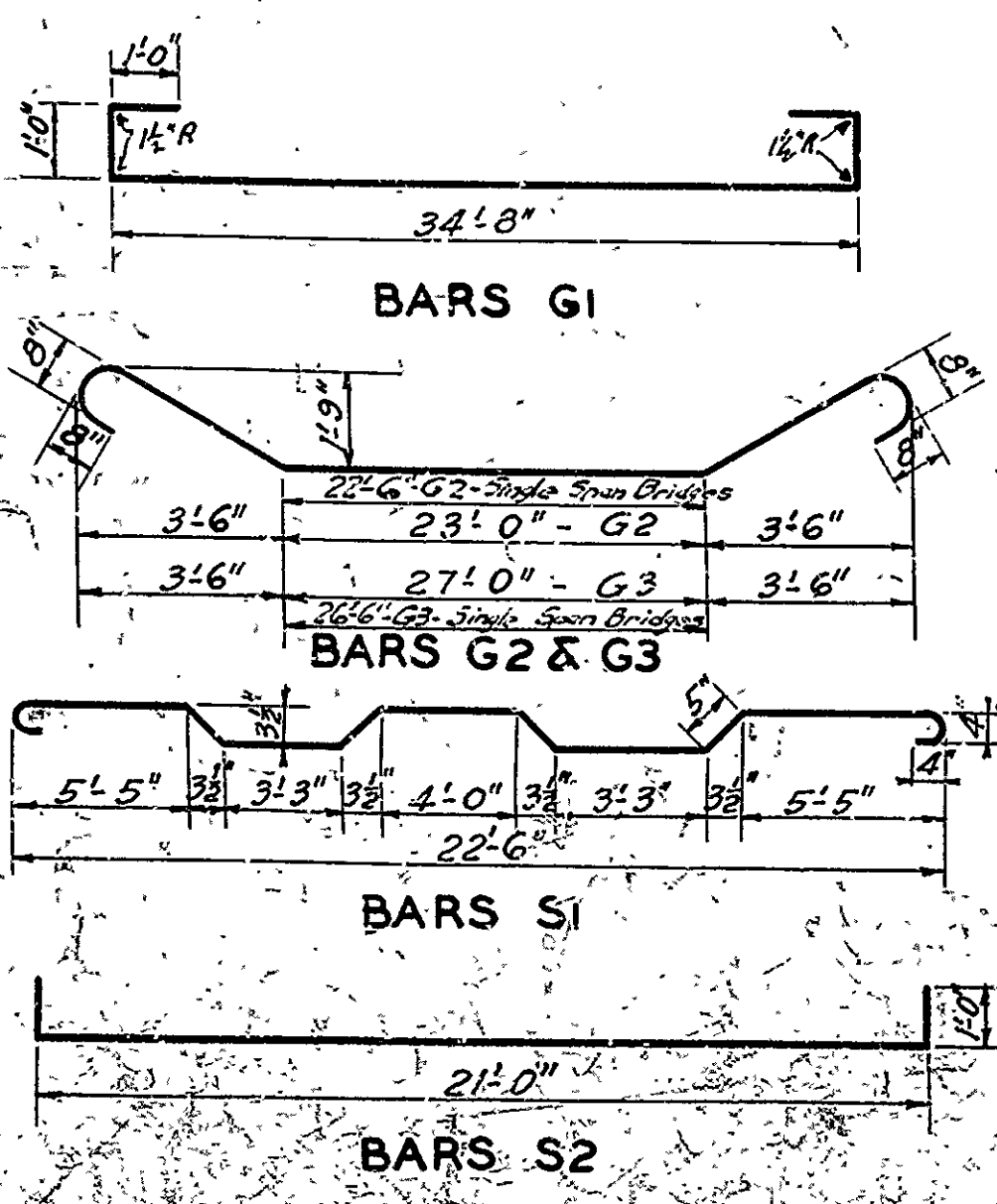
SECTION B-B

DETAIL OF COPPER WATER STOP

GENERAL NOTES

All exposed corners to have 3/4" chamfer unless otherwise noted.
Precast Concrete Handrails to be 1-1/2" max. Maximum aggregate 3/4".
Rail Posts to be Class "5" Concrete.
Reinforcing Steel to be deformed bars of Structural or Intermediate Grade. Shop List and Bending Diagrams of Steel must be submitted by Contractor before fabrication is begun.
Roadway Drains and Expansion Devices to be paid for at unit price bid for Reinforcing Steel.
All concrete above top of Column Caps, except Handrail, to be Class "5"; below, Class "A".
Specifications: Arkansas Standard Road and Bridge Specifications adopted May 30th 1925, and revised.
All Concrete to be poured in the dry.

Note: This Drawing included in Job No. 10462
1387, 1318, 4.4.75 for reference only.

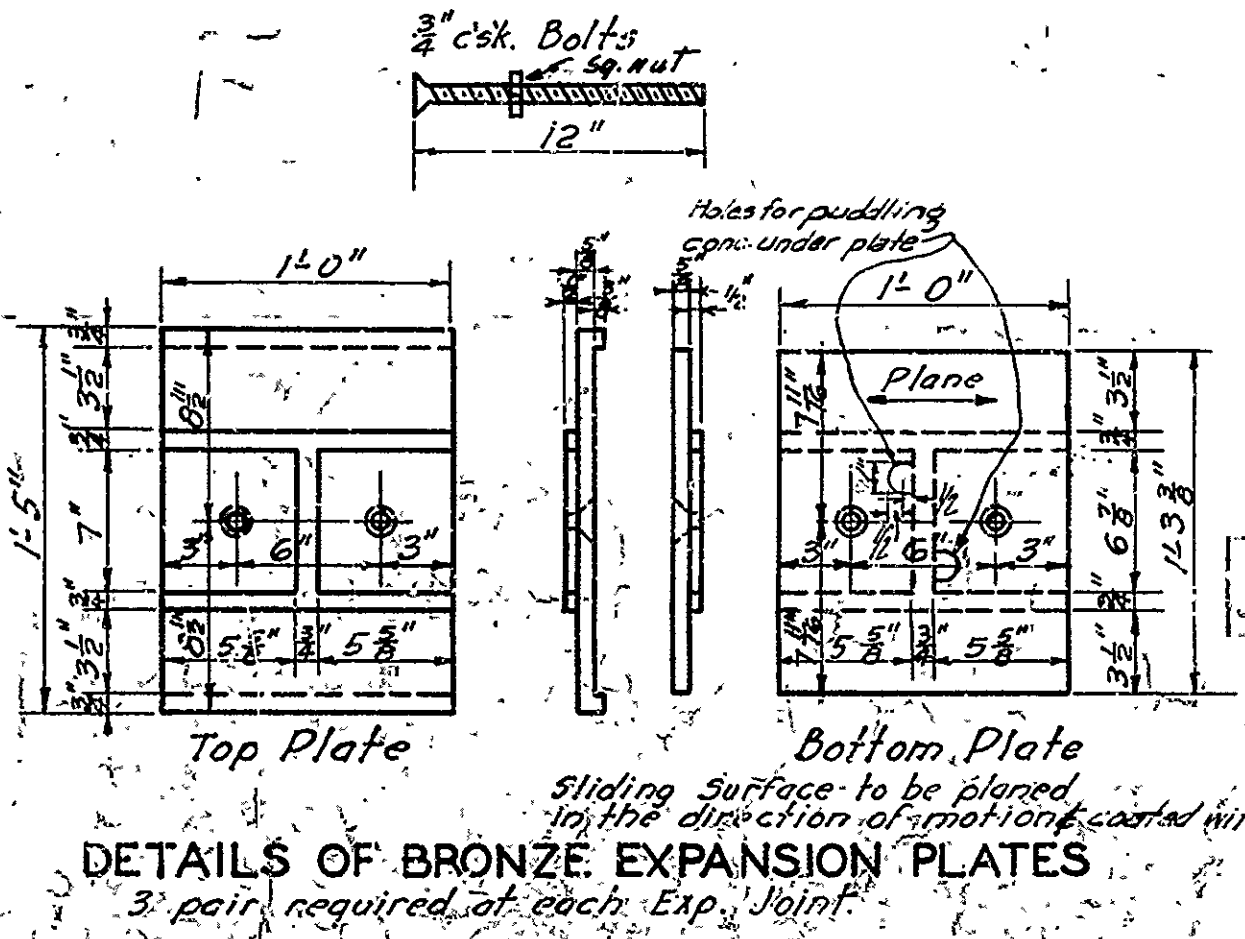


SECTION D-D

SECTION C-C

RAIL SECTION

SECTION SHOWING EXPANSION PLATES



DETAILS OF BRONZE EXPANSION PLATES

DETAIL OF C.I. DRAINS

DETAILS
STANDARD 35' R.C. DECK GIRDER
20'-0" ROADWAY

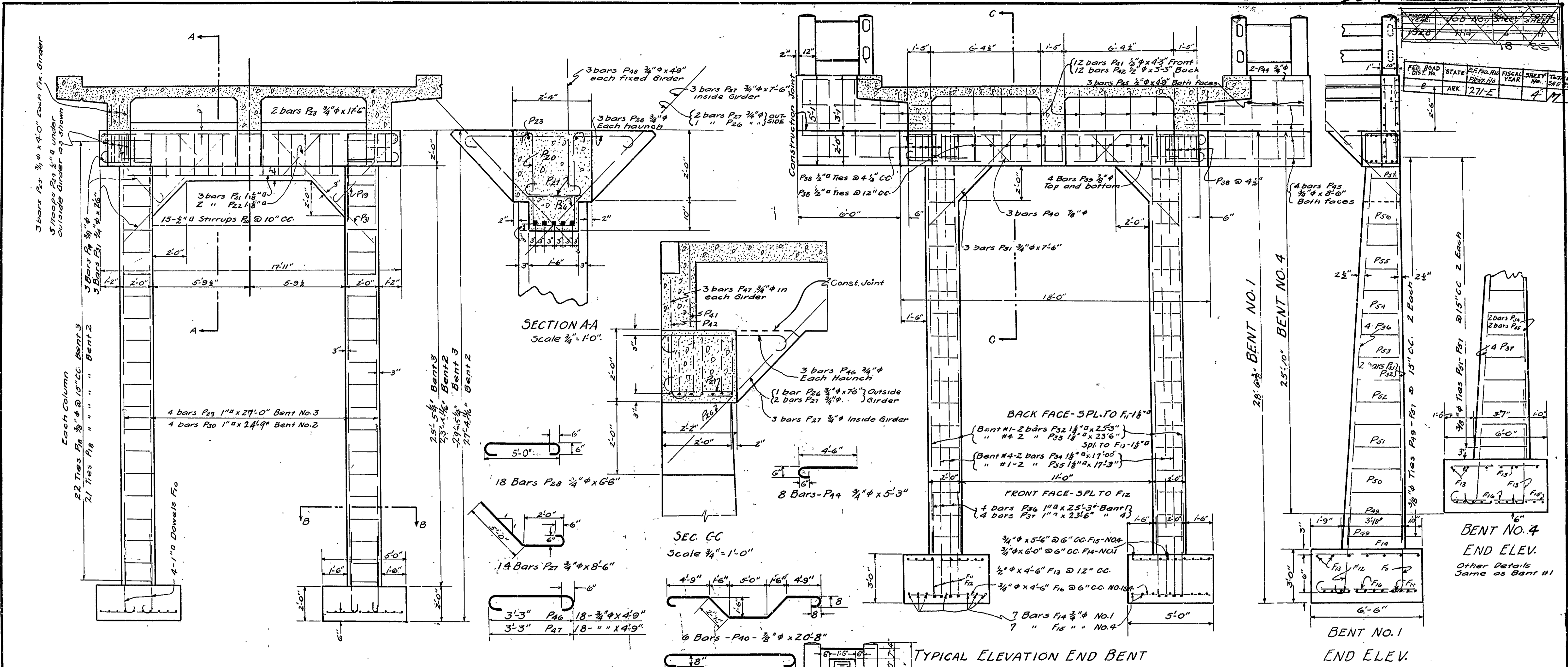
ROUTE SEC.
ARKANSAS STATE HIGHWAY DEPARTMENT
LITTLE ROCK, ARK.

Scale: 1/2" = 1'-0"
DRAWING NO. 1003

334

DETS. SUBST. FOR APP. TO BRIDGE 657 DR. B-1

PROJECT NO.	STATE	FISCAL YEAR	SHEET NO.	TOTAL SHEETS
1306-A	ARK.	27-E	47	57



TIE NO.	SIZE	A	B	LEN.
P18	7/8"	1.83	1.83	7.6
P21	1 1/8"	1.83	1.04	7.10
P38	1/2"	1.83	2.03	8.2
P44	3/4"	1.83	3.53	11.0
P50	4"	1.83	3.23	10.0
P51	8"	1.83	3.0	10.1
P52	8"	1.83	2.53	9.8
P53	8"	1.83	2.7	9.3
P54	8"	1.83	2.43	8.10
P55	8"	1.83	2.2	8.3
P56	8"	1.83	1.1	7.11
P57	8"	1.83	1.83	7.6

Do not use present Handrail. See Drawing 1306-A I.P.C. 3/1/25 F.A.P. & M.S. Bents 2712 & 2714

This drawing included in Job #1318 for reference only.

DETAILS OF SUBSTRUCTURE FOR APPROACH TO BRIDGE 657 ROUTE 67 SEC 17.35 ARKANSAS STATE HIGHWAY DEPT. LITTLE ROCK, ARK.

Drawn by Beck: 8-18-28
Traced by E.W.P. 8-22-28
Scale 3/4" = 1'-0" except as noted
BRIDGE ENGINEER
BRIDGE NO. 657
DRWG. NO. 1301